



MERTSAN
HİDROLİK - YEDEK PARÇA



mertsanhidrolik.com

ProductCatalog



Hakkımızda

Mertsan Hidrolik, hızla büyüyen beton pompa sektöründe orijinal ve kaliteli yedek parça tedarik etmek amacıyla 1999 yılında kurulmuştur.

Türkiye ve dünya genelinde sektörünün en büyük yedek parça firmalarından biri olmayı başarmıştır. Ayrıca **Mertsan Hidrolik**, yedek parça temininin yanı sıra teknik servis hizmeti de sunmaktadır.

Konya'da bulunan 1.000 metrekarelik üretim alanında, ekonomik, güvenli ve kaliteli yedek parçaları, otuz yıllık uzmanlığa sahip mühendis ve teknisyenleri ile üretmektedir. İleri teknolojiye sahip tam otomatik ve robotik makineler kullanarak uluslararası standartlarda üretim yapan Mertsan Hidrolik, ürettiği parçaları 50'den fazla ülkeye ihraç etmektedir.

Mertsan Hidrolik, SCHWING, PUTZMEISTER, CIFA,

Değerlerimiz

Mertsan Hidrolik olarak, güçlü bir değerler dizisinin başarılı bir şirketin temeli olduğuna inanıyoruz. Bu değerler, kararlarımıza ve eylemlerimize yön verirken, müşterilerimiz, ortaklarımız ve çalışanlarımızla olan etkileşimlerimizin de temelini oluşturmaktadır. Temel değerlerimizi paylaşmaktan gurur duyuyoruz:

Kalite Müşterilerimizin beklentilerini aşan yüksek kaliteli ürünler ve hizmetler sunmaya kendimizi adadık. Her alanda mükemmellik için çalışıyoruz.

Dürüstlük

Tüm ilişkilerimizde dürüstlük, şeffaflık ve adaletle hareket ediyoruz. Davranışlarımızdan ve kararlarımızdan sorumluyuz.

Yenilikçilik

Yaratıcılığı ve yenilikçiliği benimsiyoruz. Müşterilerimizin ihtiyaçlarını en iyi şekilde karşılayacak yeni çözümler geliştirmeye devam ediyoruz.

Bu değerler, şirket olarak kimliğimizi ve neyi temsil ettiğimizi yansıtmaktadır. Gelecekte de bu değerlerin bize rehberlik edeceğine ve büyümemizi sürdüreceğine inanıyoruz.

SERMAC ve ZOOMLION gibi global markaların beton pompa yedek parçalarını üretmekte olup, 3.500'den fazla üründen oluşan geniş stoğunun bir kısmını ithalat yoluyla sağlamaktadır.

Misyonumuz

Geniş ürün gamımızla müşterilerimizin yedek parça ve teknik servis ihtiyaçlarını uygun fiyatlı, sürdürülebilir ve yüksek kaliteli çözümlerle en iyi ve en hızlı şekilde karşılamak.

Vizyonumuz

Dünya genelinde beton pompa yedek parça ve teknik servis denilince akla gelen ilk firma olmak ve çalıştığımız pazarlarda en çok tercih edilen marka haline gelerek, ürün ve hizmet yelpazemizi her geçen gün kaliteyle birlikte genişletmek.

İşbirliği

Ekip çalışmasının ve ortaklıkların gücüne inanıyoruz. Müşterilerimiz, tedarikçilerimiz ve çalışanlarımızla ortak hedeflere ulaşmak için iş birliği yapıyoruz.

Sürdürülebilirlik

Çevresel etkimizi en aza indirmeye ve sürdürülebilir uygulamaları desteklemeye kararlıyız. Uzun vadeli değerler yaratmayı amaçlıyoruz.

Saygı

Çeşitliliğe, kapsayıcılığa ve tüm bireylere saygı duymaya önem veriyoruz. Başkalarına daima haysiyet ve saygıyla yaklaşıyoruz.



About Us

Mertsan Hydraulic was established in 1999 to supply original and high-quality spare parts in the rapidly growing concrete pump sector. Over the years, it has managed to become one of the largest spare parts companies in its sector in Turkey and worldwide. In addition to supplying spare parts, Mertsan Hydraulic also provides technical service.

In its 1,000 square meter production area in Konya, it produces economical, safe and high-quality spare parts with its engineers and technicians with thirty years of expertise. Using fully automatic and robotic machines with advanced technology, **Mertsan Hydraulic** manufactures at international standards and exports the parts it produces to more than 50 countries.

Mertsan Hydraulic produces concrete pump spare parts

Our Values

As **Mertsan Hydraulic**, we believe that a strong set of values is the foundation of a successful company. While these values guide our decisions and actions, they also form the basis of our interactions with our customers, partners and employees. We are proud to share our core values:

Quality: We are committed to providing high-quality products and services that exceed our customers' expectations. We strive for excellence in every field.

Integrity: We act with honesty, transparency and fairness in all our relationships. We are responsible for our actions and decisions.

Innovation: We embrace creativity and innovation. We continue to develop new solutions that will best meet the needs of our customers.

for global brands such as **SCHWING, PUTZMEISTER, CIFA, SERMAC and ZOOMLION** and imports a portion of its large stock of more than 3,500 products.

Our Mission

To meet our customers' spare parts and technical service needs in the best and fastest way with affordable, sustainable and high-quality solutions with our wide product range.

Our Vision

To be the first company that comes to mind when it comes to concrete pump spare parts and technical service worldwide and to expand our product and service range with quality every passing day by becoming the most preferred brand in the markets we operate.

Collaboration: We believe in the power of teamwork and partnerships. We collaborate with our customers, suppliers and employees to achieve common goals.

Sustainability: We are committed to minimizing our environmental impact and supporting sustainable practices. We aim to create long-term value.

Respect: We value diversity, inclusion and respect for all individuals. We always treat others with dignity and respect.

These values reflect who we are as a company and what we stand for. We believe that these values will continue to guide us and continue our growth in the future.



MERTSAN
HİDROLİK - YEDEK PARÇA



SPARE PARTS SECTION



MSH.402508
S VALVE S2018N



MSH.402509
S VALVE S2018PN INSIDE
COMPLETELY HARD WELDED



MSH.402563
S VALVE S2015N



MSH.413117
S VALVE S2018 VN
COMPLETE



MSH.402581
S VALVE S2018 VN



MSH.402585
S VALVE S2012N



MSH.402584
S VALVE S2012DN



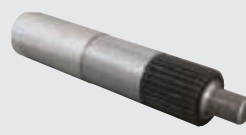
MSH.402451
S VALVE S1812DN



MSH.402250
SWINGING SHAFT 80 mm



MSH.402251
CLAMPING PRISM 80 mm



MSH.413377
80 mm SHAFT FOR S VALVE



MSH.402068
WEAR SLEEVE 220 mm



MSH.402766
WEAR SLEEVE 165 mm



MSH.402024
WEAR SLEEVE 150 mm



MSH.402091
SPECTACLE WEAR PLATE
DN200



MSH.402530
WEAR RING DN200



MSH.402134
SPECTACLE WEAR PLATE
DN180



MSH.402552
WEAR RING DN180



MSH.402838
PRESSURE RING DN200



MSH.402827
PRESSURE RING DN180



MSH.402590
PRESSURE RING DN200
WITH METAL INSIDE



MSH.414125
PRESSURE RING DN180 WITH
METAL INSIDE



MSH.413758
S VALVE S1812D9 FOR
STATIONARY PUMP



MSH.402299
DISCHARGE SUPPORT
DN220/270



MSH.402431
DISCHARGE SUPPORT
DN165/270



MSH.402313
DISCHARGE SUPPORT
DN220/270



MSH.401299
DISCHARGE SUPPORT
DN150/200



MSH.402017
BEARING FLANGE



MSH.402888
S VALVE S2318



MSH.413378
90mm SHAFT FOR S VALVE



MSH.402760
SPECTACLE WEAR PLATE
DN230



MSH.402761
WEAR RING DN230



MSH.413273
PRESSURE RING DN230
WITH METAL INSIDE



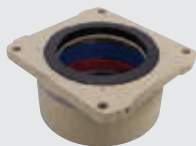
MSH.414005
S VALVE S2318VP



MSH.414006
CLAMPING PRISM 90 mm



MSH.413974
SWINGING SHAFT 90mm



MSH.413861
DISCHARGE SUPPORT
DN220/270 COMPLETE



MSH.413979
DISCHARGE SUPPORT
DN220/270



MSH.413979 SK
SEAL KIT FOR DISCHARGE
SUPPORT



MSH.413904
CLAMPING PLATE



MSH.413903
CLAMPING PLATE



MSH.413907
WEAR RING DN230/260 HM



MSH.413834
SPECTACLE WEAR PLATE



MSH.414115
SPECTACLE WEAR PLATE



MSH.402379
C VALVE



MSH.402149
KIDNEY SHAPED WEAR PLATE



MSH.401266
SPECTACLE WEAR PLATE



MSH.401233
SPECTACLE WEAR PLATE



MSH.401134
SPECTACLE WEAR PLATE



MSH.401312
COMPLETE UPPER HOUSING
ASSY 80 mm



MSH.401288
SUPPORT FLANGE 80mm



MSH.401277
WEAR SLEEVE 80mm



MSH.401353
BUSHING



MSH.412772
COMPLETE UPPER HOUSING
ASSY 80 mm



MSH.412774
WEAR SLEEVE W/GROOVE
80mm



MSH.412791
COMPLETE UPPER HOUSING
ASSY 90 mm



MSH.402885
SUPPORT FLANGE 90mm



MSH.412814
WEAR SLEEVE 90mm



MSH.412977
COLLAR DISC



MSH.402607
SLEWING LEVER



MSH.402002
SLEWING LEVER



MSH. 412773
SLEWING LEVER 80mm



MSH.402883
SLEWING LEVER 90mm



MSH.413016
WASHER



MSH.414081
SLEWING LEVER 90mm
W/O GROOVE



MSH.414127
SLEWING LEVER 80mm
W/O GROOVE



MSH.413838
COMPLETE UPPER HOUSING
ASSY 90mm



MSH.414128
COMPLETE UPPER HOUSING
ASSY 80mm



MSH.413840
SUPPORT FLANGE



MSH.413839
WEAR SLEEVE 90mm



MSH.414129
WEAR SLEEVE 80mm



MSH.414130
COLLAR DISC



MSH. 413841
BUSHING



MSH.402156
FLANGE BEARING



MSH.401760
PLUNGER CYLINDER



MSH.401771
PLUNGER CYLINDER TUBE



MSH.401724
PISTON ROD



MSH.401852
BALL CUP 40mm



MSH.402003
LEVER SAFETY PLATE



MSH.402771
PLUNGER CYLINDER 160x60



MSH.402640
PLUNGER TUBE



MSH.402629
PISTON ROD 60



MSH.412840
BALL CUP 60MM



MSH.402641
LEVER SAFETY PLATE



MSH.402898
PLUNGER CYLINDER
200x80



MSH.414131
PLUNGER CYLINDER TUBE



MSH.402900
PISTON ROD



MSH.412892
CYLINDER HEAD



MSH.413560
PLUNGER CYLINDER
160x60



MSH.413851
PLUNGER TUBE



MSH.402629
PISTON ROD 60



MSH.402897
PLUNGER CYLINDER 160x60



MSH.414132
PLUNGER TUBE



MSH.402903
PISTON ROD 60mm



MSH.414133
CYLINDER HEAD



MSH.413034
PLUNGER CYLINDER 160x80



MSH.413033
PLUNGER TUBE



MSH.413032
PISTON ROD 80mm



MSH.413941
CONNECTION BLOCK



Spare
Parts

Yedek
Parçalar



X

X

Mertsan Hidrolik olarak, dünya standartlarında yedek parça çözümleriyle müşteri memnuniyetini ve dayanıklılığı her zaman ön planda tutuyoruz.

www.mertsanhidrolik.com info@mertsanhidrolik.com +90 544 295 87 08



MSH.413327
DISTRIBUTOR GEARBOX G64
(i=0,682)



MSH.413429
DISTRIBUTOR GEARBOX G64



MSH.413879
HOUSING FOR GEARBOX G64



MSH.413718
MOUNTING FLANGE



MSH.413677
MOUNTING FLANGE



MSH.413246
CLUTCH SHAFT



MSH.413145
SPLINED SHAFT D96x391



MSH.413147
SLIDING CLUTCH



MSH.413148
SWITCH FORK



MSH.413419
SWITCHING CYLINDER



MSH.413252
PISTON



MSH.413138
SPUR WHEEL D208/114x76



MSH.413137
SPUR WHEEL
D228,1/114x76



MSH.413140
SPUR WHEEL D167,9/85x48



MSH.413139
SPUR WHEEL D147,9/85x48



MSH.413142
SPUR WHEEL D180/85x40



MSH.413141
SPUR WHEEL
D166,4/85x40



MSH.413144
SPUR WHEEL D156/85x40



MSH.413143
SPUR WHEEL D169,6/85x40



MSH.413133
SPLINED SHAFT D92x236



MSH.413146
SHAFT D92/46x196



MSH. 413270
COUPLING PIECE



MSH.413858
FLANGE



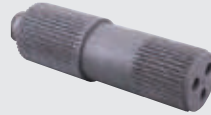
MSH.414041
DISTRIBUTOR GEARBOX
G64C



MSH.414048
HOUSING FOR GEARBOX
G64C



MSH.413739
DRIVEN SHAFT G64C



MSH.413922
DRIVE SHAFT



MSH.413671
SLIDING CLUTCH



MSH.413916
SWITCH FORK



MSH.413923
SWITCH ROD



MSH.413672
GEAR WHEEL D212x64



MSH.413674
GEAR WHEEL D143x216



MSH. 413673
GEAR WHEEL D160x128



MSH.413924
HOUSING



MSH.413740
CYLINDER HEAD



MSH.414054
GUIDE



MSH.413410
SPLINED SHAFT



MSH.413625
SPLINED SHAFT



MSH.413481
SPUR WHEEL D147/45x33



MSH.413416
SPUR WHEEL D164,9/50x30



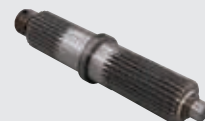
MSH.413480
SPUR WHEEL
D122,4/45x34,5



MSH.413918
CLUTCH SHAFT



MSH.413909
SLIDING CLUTCH



MSH.413111
SPLINED SHAFT



MSH.414134
SPUR WHEEL
D171,5/87,5x59



MSH.412995
SWITCH FORK



MSH.413623
FLANGE



MSH.413409
COUPLING SLEEVE



MSH.405100 A
FLANGE 21 TEETH



MSH.405100
FLANGE 23 TEETH



MSH.414141
FLANGE COUPLING



MSH.414142
DISTRIBUTOR GEARBOX G64
(i=0,659)



MSH.414143
HOUSING FOR GEARBOX
G64



MSH.414144
SPUR WHEEL D232/114x76



MSH.401234
SPUR WHEEL D167/75x36



MSH.401235
SPUR WHEEL D157/85x36



MSH.401249
SHAFT D75x142



MSH.401275
SHAFT D88/38x214



Spare
Parts

Yedek
Parçalar

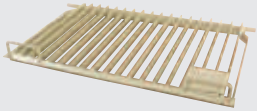


X

X

Mertsan Hidrolik olarak, dünya standartlarında yedek parça çözümleriyle müşteri memnuniyetini ve dayanıklılığı her zaman ön planda tutuyoruz.

www.mertsanhidrolik.com info@mertsanhidrolik.com +90 544 295 87 08



MSH.413421
GRILLE



MSH.414145
GRILLE RS909



MSH.412907
VIBRATOR 24V



MSH.402647
MIXING PADDLE RIGHT



MSH.402647A
MIXING PADDLE RIGHT
HARD WELDED



MSH.402646
MIXING PADDLE LEFT



MSH.402646A
MIXING PADDLE LEFT HARD
WELDED



MSH.402266
CONVEYING WORM LEFT
HAND



MSH.402277
CONVEYING WORM RIGHT
HAND



MSH.402376
BEARING FLANGE



MSH.402377
RUBBER SEAL



MSH.402016
BUSHING



MSH.413847
FLANGE



MSH.414016
WASHER FOR FLANGE



MSH.402887
MIXER SHAFT 60mm



MSH.402365
MIXER SHAFT



MSH.402651
MIXER SHAFT



MSH.402420
MIXER SHAFT



MSH.413849
MIXER SHAFT



MSH.402799
MIXER SHAFT, CENTRAL
PART



MSH.402723
MIXER SHAFT, CENTRAL
PART



MSH. 401706
MIXER SHAFT, CENTRAL
PART



MSH.401146
BEARING FLANGE CLOSED



MSH.401080
BEARING FLANGE



MSH.401061
RUBBER SEAL



MSH.401947
BEARING BUSH



MSH.401595
GEAR WHEEL SET



MSH.401650
GEAR WHEEL SET



MSH.401518
MIXER SHAFT, LEFT



MSH.402401
MIXING SHAFT



MSH.401540
MIXING SHAFT, RIGHT



MSH.402013
MIXING SHAFT



MSH. 401804
MIXING PADDLE



MSH.401815
MIXING PADDLE



MSH.401550
MIXING PADDLE



MSH.401551
MIXING PADDLE



MSH.401782
MIXING PADDLE



MSH.401794
MIXING PADDLE



MSH.402497
MIXING SHAFT



MSH.402222
MIXING SHAFT



MSH.401914
BEARING FLANGE



MSH.402145
BUSHING



MSH.401739
RUBBER SEAL



MSH.402464
CONVEYING WORM



MSH.402475
CONVEYING WORM



MSH.401628
CONTROL CABLE ASSY
6000mm



MSH.401062
CONTROL CABLE ASSY
3500mm



MSH.401672
REDUCTION PIPE



MSH.401683
REDUCTION PIPE



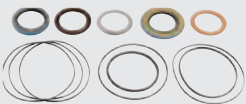
MSH.402356
SLIDE



MSH.413725
AGITATOR MOTOR BRH470



MSH.413989
AGITATOR MOTOR BRHL750



MSH.413541
SEAL SET FOR AGITATOR
MOTOR



MSH.414147
SHAFT FOR NEW AGITATOR
MOTOR BRH470



MSH.402206
AGITATOR MOTOR OMH500



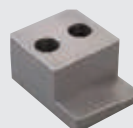
MSH.402256
SEAL SET FOR OMH500



MSH.413662
SHAFT FOR AGITATOR
MOTOR OMH500



MSH.413776
BOCK LEFT HAND SIDE



MSH.413775
BOCK RIGHT HAND SIDE



MSH.413342
TORQUE SUPPORT



MSH.414148
JOINT HEAD



Spare
Parts

Yedek
Parçalar

...

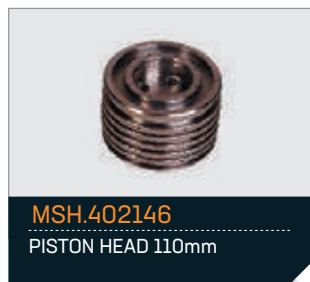
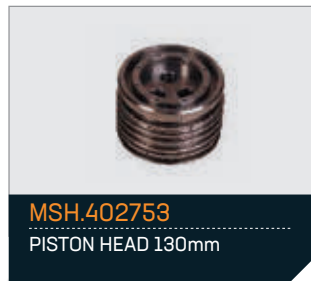
...

X

X

Mertsan Hidrolik olarak, dünya standartlarında yedek parça çözümleriyle müşteri memnuniyetini ve dayanıklılığı her zaman ön planda tutuyoruz.

www.mertsanhidrolik.com info@mertsanhidrolik.com +90 544 295 87 08





MSH.402035
GUIDE BUSHING 110mm



MSH.401399
HEAD FLANGE



MSH.414149
PISTON HEAD 160mm



MSH.401592
GUIDE BUSHING 160mm



MSH.401350
COVER



MSH.413121
WATER BOX



MSH.402260
PUMPING CYLINDER
230x2100



MSH.402764
PUMPING CYLINDER
230x1400



MSH.402123
INTERMEDIATE RING



MSH.401064
DELIVERY PISTON 230mm



MSH.401176
SPACER FLANGE 210mm



MSH.414150
DELIVERY PISTON 230mm



MSH.412774
DELIVERY PISTON SEAL
230mm



MSH.401661
GUIDE RING 230mm



MSH.401775
PISTON BENCH 230mm



MSH.402840
CONNECTION PIECE



MSH.401603
FLANGE



MSH.402794
INTERMEDIATE RING



MSH.401182
PUMPING CYLINDER
200x2100



MSH.402289
PUMPING CYLINDER
200x1400



MSH.401065
DELIVERY PISTON 200mm



MSH.413305
DELIVERY PISTON SEAL
200mm



MSH.401662
GUIDE RING 200mm



MSH.402310
INTERMEDIATE RING



MSH.402311
INTERMEDIATE RING



MSH.413722
PUMPING CYLINDER
250x2100



MSH.414151
DELIVERY PISTON 250mm



MSH.414075
SPACER FLANGE



MSH.413436
DELIVERY PISTON SEAL
250mm



MSH.414152
PISTON BENCH 250mm



MSH. 413435
GUIDE RING 250mm



MSH.413967
INTERMEDIATE RING



MSH.413800
TIE ROD



MSH.413881
TURNBUCKLE SLEEVE



MSH.413915
PUMPING CYLINDER
280x2100



MSH.414153
DELIVERY PISTON 280mm



MSH.413570
DELIVERY PISTON SEAL
280mm



MSH.413571
GUIDE RING 280mm



MSH.402383
SPACER FLANGE



MSH.414154
INTERMEDIATE RING



MSH.402515
INTERMEDIATE RING



MSH.402783
INTERMEDIATE RING



MSH.402981
TRAVERSE RING



MSH.413123
PISTON ROD FLANGE



MSH.413126
PISTON ROD FLANGE



Yedek Parçalar



Mertsan Hidrolik olarak, dünya standartlarında yedek parça çözümleriyle müşteri memnuniyetini ve dayanıklılığı her zaman ön planda tutuyoruz.

🌐 www.mertsanhidrolik.com ✉ info@mertsanhidrolik.com ☎ +90 544 295 87 08



MSH.401462
SLEWING CYLINDER TUBE
115mm



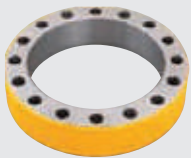
MSH.401463
TOOTHED RACK



MSH.413466
SLEWING CYLINDER TUBE
125mm



MSH.413829
TOOTHED RACK



MSH.414155
FLANGE FOR SLEWING
CYL. TUBE



MSH.414156
HALF RING



MSH.402137
PISTON HEAD



MSH.412930
SEAL SET FOR SLEWING CYL.



MSH.401389
SLIDING PIECE



MSH.402411
SLIDING PIECE



MSH.402317
SLIDING PIECE



MSH.402396
SLIDING PIECE



MSH.402280
THROAT BUSHING
COMPLETE



MSH.413337
THROAT BUSHING



MSH.408200
BUSHING 350x355x77



MSH.413312
FOOT BUSHING COMPLETE



MSH.402281
FOOT BUSHING



MSH.408199
BUSHING 275x280x80



MSH.408600
BUSHING 288x293x45



MSH.414116
BOLT 288x254x118.5



MSH.402594
BOLT 288x265x118



MSH.414157
BOLT 288x254x127



MSH.402610
BOLT 288x265x113



MSH.402726
BOLT 288x254x116



MSH.402732
BOLT 288x252x114



MSH.414158
CARRIER FOR SLEWING
GEARBOX



MSH.414102
POWER TAKE OFF PINION
(Z=18)



MSH.402021
POWER TAKE OFF PINION
(Z=23)



MSH.414086
POWER TAKE OFF PINION
(Z=15)



MSH.408150
BOLT



Spare
Parts

Yedek
Parçalar



Mertsan Hidrolik olarak, dünya standartlarında yedek parça çözümleriyle müşteri memnuniyetini ve dayanıklılığı her zaman ön planda tutuyoruz.

www.mertsanhidrolik.com info@mertsanhidrolik.com +90 544 295 87 08





MSH.413837
DELIVERY PIPE ELBOW
SK125/5.5 45° HD



MSH.401585
5.5" CLAMP COUPLING



MSH. 401593
5.5" MOUNTING COUPLING



MSH.413919
MOUNTING COUPLING 5.5 LH



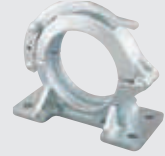
MSH.413914
CLAMP COUPLING
SK-H125-51/2



MSH.413347
MOUNTING COUPLING
5.5 RH



MSH.414159
CLAMP COUPLING
SK-H125-51/2



MSH.414160
MOUNTING COUPLING
SK-H125



MSH.414161
MOUNTING COUPLING
SK-H125



MSH.402407
SCREW MOUNTING
COUPLING SK-S125/5.5 ND



MSH.412816
SCREW MOUNTING
COUPLING



MSH.413296
SCREW COUPLING



MSH.408080
SCREW COUPLING



MSH. 401244
5" COUPLING



MSH.401078
5" MOUNTING COUPLING



MSH.402893
VIBRATION DAMPER



MSH.413209
HOSE CLAMP



MSH.402940
PRESSURE CONNECTION
ZXM150/8



MSH.413647
PRESSURE CONNECTION
ZXM125/8



MSH.413535
WELDING RING ZXV125/8



MSH.414162
REDUCTION Z XV125/SK125



MSH.401892
PRESSURE CONNECTION
SK125



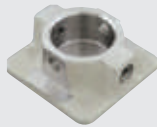
MSH.402085
PRESSURE CONNECTION
SK150



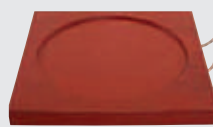
MSH.402915
PRESSURE FLANGE



MSH.413282
SWIVEL PLATE



MSH.414146
PRESSURE PLATE



MSH.413449
SUPPORT PLATE



MSH.412887
AUTOMATIC BRACKET



MSH.-
WELDING RINGS IN
DIFFERENT SIZES



MSH.401632
3" COUPLING SEAL



MSH.401050
4" COUPLING SEAL



MSH.401586
4.5" COUPLING SEAL



MSH.401711
4.5" COUPLING SEAL (3 LIPS)



MSH.401250
5" COUPLING SEAL



MSH.401513
5.5" COUPLING SEAL



MSH.401712
5.5" COUPLING SEAL (3 LIPS)



MSH.401590
6" COUPLING SEAL



MSH.-
SPONGE BALLS
DIFFERENT SIZES



Spare
Parts

Yedek
Parçalar

...

...

X

X

Mertsan Hidrolik olarak, dünya standartlarında yedek parça çözümleriyle müşteri memnuniyetini ve dayanıklılığı her zaman ön planda tutuyoruz.

www.mertsanhidrolik.com info@mertsanhidrolik.com +90 544 295 87 08



MSH.401474

TRUNK



MSH.401573

COUPLING FOR TRUNK
COVER



MSH.401485

LID



MSH.401694

TRUNK LEVER



MSH.401409

STUD BOLT



MSH.401366

HEXAGON NUT



MSH.401372

HEXAGON BOLT



MSH.401342

COUPLING



MSH.401331

BEARING RING



MSH.401397

PRESSURE PIPE



MSH.401452

PRESSURE PIPE



MSH.401826

TRUNK CYLINDER



MSH.401737

TRUNK CYLINDER HOUSING



MSH.401738

PISTON ROD



MSH.401430

GUIDE BUSH



MSH.401496

JOINT HEAD



MSH.401606

TRUNK CYLINDER



MSH.401442

CYLINDER HOUSING



MSH.401441

PISTON ROD



MSH.401558

SLEEVE



MSH.401594
SLEEVE



MSH.401179
WEAR PLATE



MSH.401848
SPECTACLE PLATE



MSH.401343
WEAR STRIP



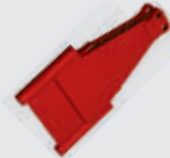
MSH.402896
WEAR PLATE



MSH.401344
TIGHTENER



MSH.402189
TRUNK B2314



MSH.402255
TRUNK LEVER



MSH.401409
STUD BOLT



MSH.402717
WEAR RING



MSH.402849
PRESSURE RING



MSH.401573
COUPLING FOR TRUNK
COVER



MSH.401375
PRESSURE PIPE



MSH.401716
FLANGE FOR PRESSURE PIPE



MSH.401705
SCREW COUPLING



MSH.402923
TRUNK



MSH.402818
CLAMP COUPLING



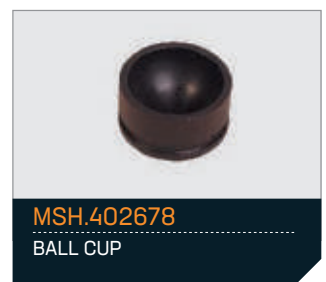
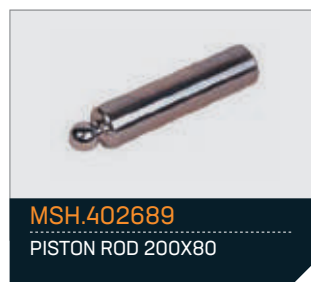
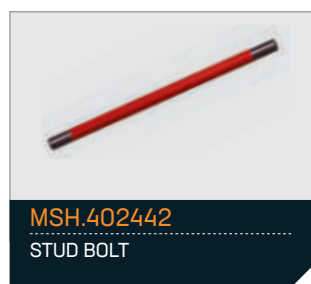
MSH.402805
PRESSURE PIPE



MSH.401716
FLANGE FOR PRESSURE
PIPE



MSH.402952
SUPPORT PIPE





MSH.402406
THREADED BOLT



MSH.402600
COUPLING



MSH.402596
BEARING RING



MSH.401342
COUPLING



MSH.401331
BEARING RING



MSH.402986
TRUNK



MSH.403004
THRUST RING



MSH.402996
WEAR RING



MSH.402987
WEAR RING



Spare
Parts

Yedek
Parçalar



Mertsan Hidrolik olarak, dünya standartlarında yedek parça çözümleriyle müşteri memnuniyetini ve dayanıklılığı her zaman ön planda tutuyoruz.

www.mertsanhidrolik.com info@mertsanhidrolik.com +90 544 295 87 08



MSH.412999
SHUT OFF VALVE
HYDRAULIC



MSH.412897
SHUT OFF VALVE MANUEL



MSH.401583
3mt DELIVERY PIPE SK125



MSH.401387
DELIVERY PIPE
ZX125/5.5"x7.1x3000mm



MSH.401388
90 DEG ELBOW ZX125
R1000



MSH.401394
90 DEG ELBOW ZX125 R281



MSH.412865
45 DEG ELBOW ZX125 R1000



MSH.412974
90 DEG ELBOW SK125 R1000
HD



MSH.412975
45 DEG ELBOW SK125
R1000 HD



MSH.413150
30 DEG ELBOW SK125
R1000 HD



MSH.401393
90 DEG ELBOW ZX125 R281



MSH.401597
45 DEG ELBOW ZX125 R281



MSH.401596
30 DEG ELBOW ZX125
R281



MSH.412866
SCREW COUPLING ZX-S 5"
HD



MSH.413320
CLAMP COUPLING ZX-W 5"
HD



MSH.412805
CLAMP COUPLING ZX-K 5"
HD



MSH.412866 A
CLAMP COUPLING ZX-S
5" HD



MSH.413591
T PIPE SK 50cm



MSH.402388
Y PIPE SK



MSH.401384
WELDING RING ZXV125



MSH.401383
WELDING RING ZXM125



MSH.413004
CLEANING PORT SK125



MSH.-
END HOSE



MSH.201926
U BOLT



MSH.000154
U BOLT M24 Ø168



MSH.000155
PIPE HOLDER STEEL



Spare
Parts

Yedek
Parçalar

...



...

X

X

Mertsan Hidrolik olarak, dünya standartlarında yedek parça çözümleriyle müşteri memnuniyetini ve dayanıklılığı her zaman ön planda tutuyoruz.

www.mertsanhidrolik.com info@mertsanhidrolik.com +90 544 295 87 08



MSH.414030
OIL RADIATOR 24V



MSH.412871
HYDR. ACCUMULATOR 4LT



MSH.413179
BLADDER 4LT



MSH.413129
HYDR. ACCUMULATOR 6LT



MSH.413163
BLADDER 6LT



MSH.413354
4/3 WAY VALVE



MSH.413353
4/2 WAY VALVE



MSH.412885
4/3 WAY VALVE 24V



MSH.412839
4/3 WAY VALVE 24V



MSH.413399
SOLENOID COIL 24V



MSH.413388
SOLENOID COIL 24V



MSH.414010
REMOTE CONTROL UNIT



MSH.413564
REMOTE CONTROL CABLE
42 POLE



MSH.401655
BATTERY 3,0 Ah



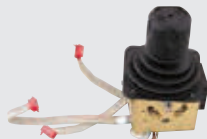
MSH.413653
BATTERY 4,2 Ah



MSH.413833
STAR HANDLE SWITCH



MSH.413438
STAR HANDLE SWITCH



MSH.413499
STAR HANDLE SWITCH



MSH.413726
FLIP SWITCH



MSH.413787
FLIP SWITCH



MSH.413859
FLIP SWITCH



MSH.414070
FLIP SWITCH



MSH.413491
TOGGLE SWITCH



MSH.413035
STAR HANDLE SWITCH



MSH.414163
POH REVERSE ELECTRONIC



MSH.414034
DISTRIBUTOR CASING



MSH.413960
SOLENOID COIL 12V



MSH.413959
SOLENOID COIL 24V



MSH.413962
PRESS BUTON SWITCH



MSH.408360
SOLENOID 24V



MSH.413557
WATER PUMP



MSH.413346
HYDRAULIC MOTOR



MSH.413258
LIMIT SWITCH



MSH.413411
ADJUSTMENT VALVE 24V



MSH.413692
CARTRIDGE VALVE



MSH.413694
SOLENOID COIL 24V



MSH.413911
3/2 PNEUMATIC VALVE



MSH.413007
3/2 PNEUMATIC VALVE



MSH.412944
PNEUMATIC VALVE



MSH.413569
OUTPUT REGULATION 24V



MSH.413518
5/2 WAY VALVE



MSH.412868
STEP RELAY



MSH.413576
DISTRIBUTOR CASING



MSH.413071
STEP RELAY 24V



MSH.413913
SOLENOID COIL 24V



MSH.414004
CLAMPING PLATE



MSH.413953
PARTS SET FOR FLUSHING VALVE



MSH.413912
MULTIPLE VALVE



MSH.412883
PRESSURE LIMITING VALVE
210 BAR



MSH.414009
INSERT FOR PRESS. LIMIT
VALVE 140 BAR



MSH.412953
PROXIMITY LIMIT SWITCH



MSH.412855
MAGNETIC SWITCH



MSH.412875
CABLE FOR MAGNETIC
SWITCH



MSH.413341
MULTIPLE PLUG 2mt



MSH.413797
MULTIPLE PLUG 15mt



MSH.413318
PRESSURE SENSOR



MSH.413938
TEMPERATURE
TRANSMITTER



MSH.413605
4/3 WAY VALVE



MSH.413553
4/3 WAY VALVE



MSH.413418
INPUT MODULE FOR CON.
PUMP



MSH.413886
INPUT MODULE FOR REGUL.
PUMP



MSH.413736
HYDR. PROP. VALVE 24V
16/25 l



MSH.413348
OPERT. MODE SELC. VALVE
24V



MSH.413349
HYDR. PROP. VALVE 24V
35/35 l



MSH.413422
HYDR. PROP. VALVE 24V
25/40 l



MSH.412821
HAND CONTROL



MSH.413715
BALL COCK



MSH.413289
BALL COCK



MSH.413319
SEAL SET



MSH.413387
SEAL SET



MSH.414038
LUBRICANT DISTRIBUTOR



MSH.412853
SOLENOID 24V



MSH.413794
CONTROL PRESS.
REGULATOR



MSH.413573
CONTROL BLOCK 24V



MSH.414073
CONTROL BLOCK



MSH.413425
VALVE SECTION



MSH.413905
MODULE 24V



MSH.412882
TEMPERATURE
TRANSMITTER 70°C



MSH.413976
TEMPERATURE SWITCH 90°C



MSH.413815
TEMP. TRANSMITTER



MSH.414114
FILTER HOUSING



MSH.413836
FILTER CARTRIDGE



MSH.402019
FILTER ELEMENT



MSH.413014
FILTER ELEMENT



MSH.403100
FILTER ELEMENT



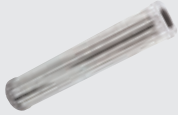
MSH.413099
FILTER ELEMENT



MSH.413075
AIR FILTER



MSH.402884
FILTER ELEMENT



MSH.413005
FILTER ELEMENT



MSH.402886
FILTER ELEMENT



MSH.412793
FILTER ELEMENT



MSH.413798
FILTER ELEMENT



MSH.413835
FILTER ELEMENT



MSH.413047
BLOCK DIRECTION VALVE



MSH.413593
DIRECTION VALVE



MSH.413010
HYDRAULIC MOTOR



MSH.413762
HYDR. CHECK VALVE



MSH.413969
FAN



MSH.413664
ENERGY GUIDING CHAIN



MSH.413993
SHUT OFF MONOBLOCK



MSH.412921
SHUTOFF MONOBLOCK



MSH.414013
SHUTOFF MONOBLOCK



MSH.412976
SEAL SET 140/120



MSH.413579
SEAL SET 320/200



MSH.413224
SEAL SET 225/140



MSH.413226
SEAL SET 180/125



MSH.413403
SEAL SET 280/180



MSH.413216
SEAL SET 115/80



MSH.413939
SEAL SET 250/180



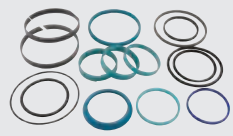
MSH.413083
SEAL SET 200/125



MSH.413877
SEAL SET 320/180



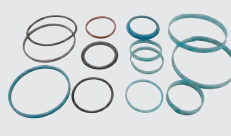
MSH.413585
SEAL SET 115/80



MSH.413730
SEAL SET 115/70



MSH.413670
SEAL SET



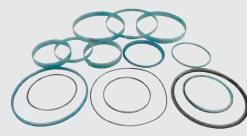
MSH.413680
SEAL SET 125/70



MSH.413665
SEAL SET 180/125



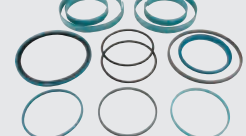
MSH.413367
SEAL SET



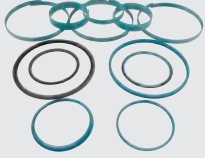
MSH.413729
SEAL SET 250/150



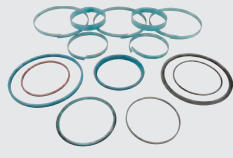
MSH.414057
SEAL SET 120/100



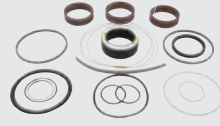
MSH.414180
SEAL SET



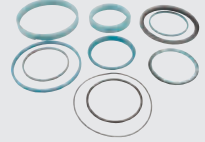
MSH.414181
SEAL SET



MSH.413681
SEAL SET 225/140



MSH.414039
SEAL SET



MSH.413668
SEAL SET 165/105



MSH.414000
SEAL SET



MSH.412956
SEAL SET



MSH.412921
SHUTOFF MONOBLOCK



MSH.414013
SHUTOFF MONOBLOCK



MSH.412976
SEAL SET 140/120



MSH.413579
SEAL SET 320/200



MSH.413224
SEAL SET 225/140



MSH.413226
SEAL SET 180/125



MSH.413403
SEAL SET 280/180



MSH.413216
SEAL SET 115/80



MSH.413939
SEAL SET 250/180



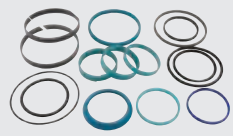
MSH.413083
SEAL SET 200/125



MSH.413877
SEAL SET 320/180



MSH.413585
SEAL SET 115/80



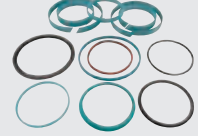
MSH.413730
SEAL SET 115/70



MSH.413670
SEAL SET



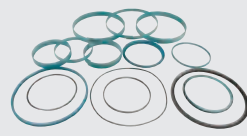
MSH.413680
SEAL SET 125/70



MSH.413665
SEAL SET 180/125



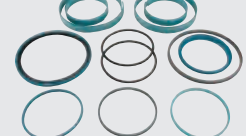
MSH.413367
SEAL SET



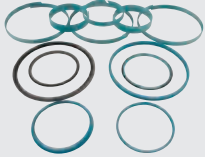
MSH.413729
SEAL SET 250/150



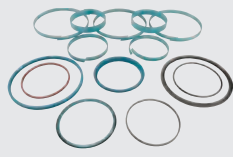
MSH.414057
SEAL SET 120/100



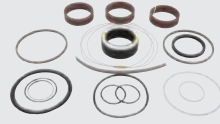
MSH.414180
SEAL SET



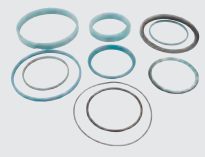
MSH.414181
SEAL SET



MSH.413681
SEAL SET 225/140



MSH.414039
SEAL SET



MSH.413668
SEAL SET 165/105



MSH.414000
SEAL SET



MSH.412956
SEAL SET



MERTSAN
HİDROLİK - YEDEK PARÇA

SPARE PARTS



SPARE PARTS
SECTION



MSH.207451

ROCK VALVE UNIT
DN250/220/180



MSH.207622

HOUSING DN250/220/180



MSH.201321

BUSHING C



MSH.201362

TOP COVER



MSH.201409

ROCK VALVE DN210/180 M



MSH.201201

BACK UP RING DN210



MSH.201431

SLEWING SHAFT SHORT
ROCK 2 BOLT TYPE



MSH.201453

SLEWING SHAFT SHORT
ROCK 4 BOLT TYPE



MSH.201420

CUTTING RING DN210
NORMAL



MSH.201415

PRESSURE SPRING DN210



MSH.201401

KIDNEY SEALING DN180



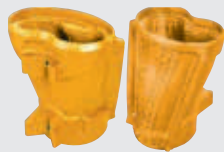
MSH.201454

SETTING DISC



MSH.201438

TENSION NUT



MSH.201423

ROCK VALVE DN220/180



MSH.206822

ROCK EXTENSION DN210/210



MSH.201432

SLEWING SHAFT



MSH.206569

TENSION NUT



MSH.201425

CUTTING RING DN220
NORMAL



MSH.206502

CUTTING RING DN230
NORMAL



MSH.207088

BACK UP RING DN220



MSH.207089
ROCK VALVE DN210/180



MSH.201404
ROCK VALVE DN210/180 L



MSH.201436
SLEWING SHAFT L



MSH.201412
CLAMPING PRISM



MSH.201433
ROCK DN165/135 SHORT
CPL.



MSH.201442
CUTTING RING DN165
NORMAL



MSH.206708
SLEWING SHAFT



MSH.201332
BASE PLATE



MSH.201283
WEARING INSERT DN180



MSH.201288
WEARING INSERT DN200



MSH.201299
WEARING INSERT DN230



MSH.206832
BASE PLATE DN250



MSH.201300
WEARING INSERT DN250



MSH.206501
WEARING INSERT DN250



MSH.201365
HOUSING LINING DN180



MSH.201360
PUMI WEARING INSERT
DN180



MSH.206510
PUMI WEARING INSERT
DN150



MSH.201392
HOUSING LINING DN135



MSH.206761
KIDNEY SEALING DN135



MSH.207724
WEARING INSERT DN180 FOR
STATIONARY PUMP



MSH.207624
HOUSING LINING FOR
STATIONARY PUMP



MSH.201343
SEALING COVER



MSH.207049
SEALING COVER



MSH.201354
BEARING BUSH



MSH.201347
SUPPORT BUSHING



MSH.201434
BEARING BUSH



MSH.201387
BEARING BUSH



MSH.201389
SUPPORT BUSHING



MSH.201376
COVER LINING



MSH.206745
SUPPORT BUSHING FOR
STATIONARY PUMP



MSH.201715
COVER



MSH.201486
SLEWING CYLINDER



MSH.201460
SLEWING CYLINDER



MSH.201459
SLEWING LEVER



MSH.206585
SLEWING LEVER



MSH.201457
SLEWING PIVOT



MSH.206511
BUSHING SPLIT



MSH.201458
SLEWING PIVOT



MSH.201476
ROD EYE



MSH.201487
CYLINDER HEAD



MSH.201472
CYLINDER SUPPORT



MSH.201468
CYLINDER TUBE



MSH.201462
CYLINDER HEAD



MSH.201470
TENSION RING



MSH.201461
PROTECTING TUBE



MSH.201464
PISTON ROD



MSH.206986
SEAL SET FOR SLEWING
CYLINDER



MSH.201475
BOLT



MSH.201455
BOLT



MSH.201490
COVER



MSH.206735
BASE PLATE NG10



Spare
Parts

Yedek
Parçalar



Mertsan Hidrolik olarak, dünya standartlarında yedek parça çözümleriyle müşteri memnuniyetini ve dayanıklılığı her zaman ön planda tutuyoruz.

www.mertsanhidrolik.com info@mertsanhidrolik.com +90 544 295 87 08



MSH.201512
AGITATOR BEARING



MSH.201519
SUPPORT



MSH.201530
FLANGED SHAFT



MSH.201574
SEALING CONE



MSH.201118
BUSHING



MSH.201515
AGITATOR BEARING



MSH.201541
FLANGED SHAFT COVER



MSH.201552
SUPPORTING COVER



MSH.201563
FLANGED SHAFT



MSH.201124
FLANGE BUSHING



MSH.201114
DISC



MSH.207635
AGITATOR BEARING



MSH.207383
FLANGED SHAFT



MSH.207625
BEARING COVER



MSH.201996
AGITATOR MOTOR



MSH.207726
TORQUE STABILIZER



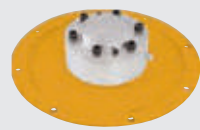
MSH.206757
MOTOR BUSHING



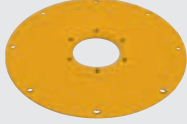
MSH.206665
BUSHING



MSH.207727
PLATE



MSH.207066
AGITATOR SUPPORT FIXED
SIDE



MSH.206671
 ADAPTER FLANGE



MSH.201575
 AGITATOR SHAFT COMPLETE



MSH.206582
 AGITATOR SHAFT COMPLETE



MSH.206520
 AGITATOR SHAFT COMPLETE



MSH.207212
 GEAR BOX COMPLETE
 S423



MSH.201040
 HOLLOW SHAFT 65x10



MSH.201038
 PINION GEAR



MSH.201043
 TOOTHED WHEEL



MSH.201034
 HOUSING FOR AGITATOR
 GEAR BOX



MSH.201036
 ALU. FLANGE



MSH.207051
 SHAFT FOR AGITATOR
 MOTOR



MSH.207000
 SEAL SET FOR AGITATOR
 MOTOR



MSH.201200
 BEARING FLANGE CLOSED



MSH.201222
 BEARING FLANGE OPEN



MSH.201117
 BUSHING



MSH.201233
 FLANGED SHAFT BEARING
 SIDE



MSH.201579
 FLANGED SHAFT



MSH.201244
 FLANGED SHAFT GEAR SIDE



MSH.201508
 SEALING CONE



MSH.201970
 SEALING CONE



MSH.201838
HINGE



MSH.201812
OUTLET ELBOW 14 DEG



MSH.201812 A
OUTLET ELBOW 14 DEG
INSIDE HARD WELDED



MSH.201816
REDUCTION ELBOW



MSH.201794
REDUCTION ELBOW



MSH.201794 A
REDUCTION ELBOW INSIDE
HARD WELDED



MSH.201772
ELBOW 90 DEG DN150



MSH.201772 A
ELBOW 90 DEG DN150
INSIDE HARD WELDED



MSH.206626
ELBOW DN180 90 DEG



MSH.206626 A
ELBOW DN180 90 DEG
INSIDE HARD WELDED



MSH.206534
ELBOW DN180 90 DEG



MSH.206534 A
ELBOW DN180 90 DEG
INSIDE HARD WELDED



MSH.207321
ELBOW DN180 90 DEG
LONG



MSH.202276
CONNECTING FLANGE DN180
HARDFACED



MSH.206050
ELBOW HINGED DN180/150
90°/14° HARDFACED



MSH.201761
ELBOW 90 DEG DN150



MSH.201770
ELBOW 90 DEG



MSH.201792
ELBOW DN150 76 DEG



MSH.201674
ELBOW DN125 90 DEG R=375



MSH.201706
ELBOW DN125 90 DEG
W/100mm EXTENSION



MSH.201849
 ELBOW DN125 90 DEG
 W/340mm EXTENSION



MSH.201750
 HOSE ADAPTER



MSH.201503
 CLOSURE DN250



MSH.201497
 SEALING RING DN250



MSH.201502
 CLAMPING PIECE LEFT



MSH.201501
 CLAMPING PIECE RIGHT



MSH.207430
 SEALING RING DN180



MSH.206882
 LOCKING COVER RIGHT



MSH.206881
 LOCKING COVER LEFT



MSH.207589
 SEALING RING



MSH.201758
 DELIVERY TUBE DN150
 1600MM



MSH.206516
 TAPERED TUBE DN180/150-
 1500MM



MSH.207297
 TAPERED TUBE
 DN180/150-1570MM



MSH.201717
 TAPERED TUBE DN150/125-
 1240MM



MSH.207392
 TAPERED TUBE DN150/125-
 1550MM



MSH.202135
 DELIVERY TUBE DN150
 1550MM



MSH.201731
 TAPERED TUBE
 DN150/125-1600MM



MSH.202136
 TAPERED TUBE DN150/125-
 2500MM



MSH.201699
 TAPERED TUBE DN150/125-
 2540MM



MSH.201783
 ELBOW DN150 45 DEG



MSH.206594
ELBOW DN150 40 DEG



MSH.206584
ELBOW 50 DEG DN125



MSH.206786
ELBOW 40 DEG DN125



MSH.201673
CUP TYPE COUPLING 6"



MSH.201695
ELBOW 32.5 DEG DN125



MSH.201684
ELBOW 14 DEG DN125



MSH.201734
SCREW TYPE COUPLING 5 1/2"



MSH.201735
SCREW COUPLING WITH FLANGE



MSH.201981
CUP TENSION COUPLING DN150



MSH.206664
CUP TENSION COUPLING DN180



MSH.201973
COUPLING SEAL 6"



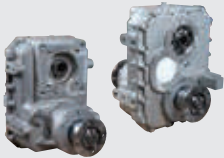
Spare
Parts

Yedek
Parçalar

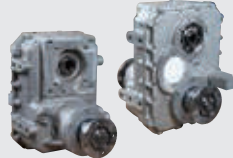


Mertsan Hidrolik olarak, dünya standartlarında yedek parça çözümleriyle müşteri memnuniyetini ve dayanıklılığı her zaman ön planda tutuyoruz.

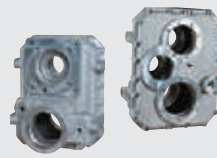
www.mertsanhidrolik.com info@mertsanhidrolik.com +90 544 295 87 08



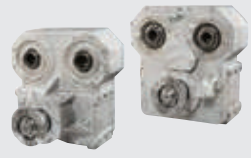
MSH.207252
COMPLETE GEAR BOX
NEW MODEL (i=0,825)



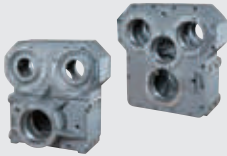
MSH.207728
COMPLETE GEAR BOX NEW
MODEL (i=0,656)



MSH.207746
HOUSING FOR GEAR BOX



MSH.207643
DISTRIBUTOR GEAR BOX
(i=0,776)



MSH.207735
HOUSING FOR GEAR BOX



MSH.207740
HOLLOW SHAFT FOR
GEARBOX 4496



MSH.207736
HOLLOW SHAFT FOR
GEARBOX D92x236



MSH.207737
SPUR WHEEL D208/150x76



MSH.207741
TOOTHED SHAFT D96x391



MSH.207747
CLUTCH SHAFT



MSH.207742
SLIDING COUPLING FOR
GEARBOX 4496



MSH.207743
GEARSHIFT FORK ASSY



MSH.207745
SPUR WHEEL D169/85x40



MSH.207748
SPUR WHEEL D167.5/85x48



MSH.208020
SPUR WHEEL D166/85x40



MSH.208017
SHAFT FOR GEARBOX



MSH.208012
SWITCHING CYLINDER



MSH.208008
FLANGE



MSH.207598
COUPLING PIECE



MSH.207626
COUPLING PIECE



MSH.207729
SPUR WHEEL D 167/75x36



MSH.207732
SPUR WHEEL D 177/85x36



MSH.207749
SPUR WHEEL D212/114x76



MSH.207765
SHAFT D75x142



MSH.207241
DISTRIBUTOR GEAR BOX
1:1.2856



MSH.207780
DISTRIBUTOR GEAR BOX
1:1.0396



MSH.207730
HOUSING FOR GEAR BOX
4194



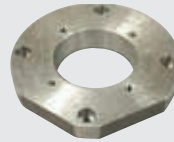
MSH.207738
SPUR WHEEL D232/130x76



MSH.206965
ADAPTER FLANGE



MSH.207774
ADAPTER FLANGE



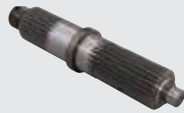
MSH.206966
ADAPTER FLANGE



MSH.206687
MEGI CONE



MSH.207750
CLUTCH SHAFT



MSH.207766
TOOTHED SHAFT



MSH.207772
SPUR WHEEL D167/110x59



MSH.201084
HOLLOW SHAFT



MSH.207773
SLIDING COUPLING FOR
GEARBOX



MSH.208112
GEARSHIFT FORK ASSY



MSH.207785
SHAFT



MSH.208113
SPUR WHEEL D184/75x32



MSH.208003
SPUR WHEEL D164/75x36



MSH.208016
SPUR WHEEL D148/75x32



MSH.208021
SPUR WHEEL D144/75x32



MSH.208032
SPUR WHEEL D182/70x32



MSH.208025
SPUR WHEEL D182/95x59



MSH.208026
FLANGE



MSH.201047
COUPLING GEAR



MSH.201058
COUPLING GEAR



MSH.201069
COUPLING GEAR



MSH.201080
COUPLING GEAR



Spare
Parts

Yedek
Parçalar

Mertsan Hidrolik olarak, dünya standartlarında yedek parça çözümleriyle müşteri memnuniyetini ve dayanıklılığı her zaman ön planda tutuyoruz.

www.mertsanhidrolik.com info@mertsanhidrolik.com +90 544 295 87 08



MSH.201860
CYLINDER TUBE



MSH.201859
TOOTHED RACK



MSH.201141
PISTON HEAD



MSH.207487
SEAL SET



MSH.206844
SLIDE



MSH.207645
SLEWING GEAR ASSY



MSH.207751
PINION GEAR



MSH.207792
PINION GEAR



MSH.207763
GEAR CARRIER



MSH.201109
PINION GEAR



MSH.208111
PINION GEAR



MSH.201882
BUSHING



MSH.207057
PEDESTAL BUSHING



MSH.207056
COLLAR BUSHING



MSH.206513
BUSHING



MSH.206512
BUSHING



MSH.201893
THREADED BOLT



MSH.201102
NUT



MSH.201091
NUT



MSH.201904
SLEEVE



MSH.207235
CABLE DRUM



MSH.207339
ROLLER HOLDER



MSH.207275
ECCENTRIC BOLT



MSH.207219
OUTRIGGER LOCK



MSH.207468
ROLLER



MSH.201252
CONVEYING CYLINDER
200x2000



MSH.206558
CONVEYING CYLINDER
200x1600



MSH.207629
CONVEYING CYLINDER
180x2000



MSH.201596
HALF RING DN180
212/190x12



MSH.201113
HALF RING DN200
232/210x12



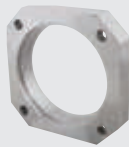
MSH.206595
LEADING RING DN180



MSH.201111
LEADING RING DN200



MSH.201310
TRANSITION PIECE
DN200/200



MSH.206775
FLANGE DN200



MSH.206557
CONVEYING CYLINDER
230x2000



MSH.201255
HALF RING DN230
262/242x12



MSH.206528
TRANSITION PIECE
DN230/210



MSH.207523
FLANGE DN230



MSH.207009
FLANGE DN230



MSH.207008
FLANGE DN230



MSH.201253
LEADING RING DN230



MSH.207350
PUMPING PISTON DN150



MSH.201933
PUMPING PISTON DN180



MSH.207032
PUMPING PISTON DN180



MSH.201610
PUMPING PISTON DN200



MSH.201611
PUMPING PISTON DN230



MSH.206669
PUMPING PISTON DN250



MSH.201607
PISTON JOINT



MSH.201123
PISTON CONNECTION



MSH.201618
EXTENTION



MSH.201629
COUPLING



MSH.206721
RAM CONNECTION



MSH.207226
FLANGE COUPLING FOR
PISTON ROD 75mm



MSH.206568
FLANGE COUPLING FOR
PISTON ROD 80mm



MSH.206102
CONVEYING CYLINDER
250x2500



MSH.206899
LEADING RING DN250



MSH.206500
HALF RING DN250



MSH.206898
FLANGE DN250



MSH.206515
TRANSITION PIECE
DN250/220



MSH.207183
DIFFERENTIAL CYLINDER
D120/80x1600



MSH.207083
 CYLINDER BLOCK
 D120/80x1600



MSH.201646
 PISTON ROD 80x1892



MSH.201266
 TENSION RING



MSH.201662
 GUIDE BUSHING D120/80



MSH.201640
 HYDRAULIC PISTON
 120x80



MSH.207300
 DIFFERENTIAL CYLINDER
 D120/80x2000



MSH.207693
 CYLINDER BLOCK
 D120/80x2000



MSH.207678
 DIFFERENTIAL CYLINDER
 D125/80x2000



MSH.207084
 CYLINDER BLOCK
 D125/80x2000



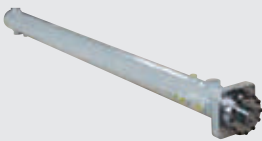
MSH.201277
 GUIDE BUSHING D125/80



MSH.201642
 HYDRAULIC PISTON 125x80



MSH.201263
 PISTON ROD 80x2292



MSH.207781
 DIFFERENTIAL CYLINDER
 D110/75x2000



MSH.207782
 CYLINDER BLOCK
 D110/75x2000



MSH.207229
 GUIDE BUSHING D110/75



MSH.208110
 SEALING SET FOR 110/75



MSH.207794
 GUIDE BUSHING D110/75



MSH.207516
 SEAL SET FOR DIFFERENTIAL
 CYL 110/75



MSH.207134
 PISTON ROD 75x2292



MSH.207133
 HYDRAULIC PISTON 110x75





MSH.206697
ELBOW DN125 90° R100
NORMAL COLLAR O



MSH.201743
FLANGE DN125 FEMALE



MSH.201744
FLANGE DN125 MALE



MSH.201700
DELIVERY TUBE DN125
3000mm



END HOSE DN125



MSH.412893
END HOSE HOLDER



MSH.201583
FLAT GATE VALVE KIT



MSH.201582
CONTROL HOUSING
180/55/25



MSH.201112
FLAT GATE VALVE
180/55/25



MSH.201250
FLAT GATE VALVE 210/55/30



MSH.201584
SHELL 180/55/25



MSH.201248
SHELL 210/55/30



MSH.201586
GUIDE SLEEVE



MSH.201820
PIN



MSH.201108
PIN



MSH.201158
PLUNGER HOUSING DN180



MSH.201163
PLUNGER HOUSING



MSH.201160
PISTON BOLT



MSH.201167
PISTON BUSHING



MSH.201178
BEARING BUSHING



MSH.201211
BEARING BUSHING



MSH.201182
SPACING RING



MSH.201189
SEALING RING



MSH.201159
PLUNGER HOUSING FLANGE



Spare
Parts

Yedek
Parçalar

Original HBC Parts

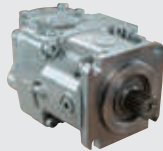


Mertsan Hidrolik olarak, dünya standartlarında yedek parça çözümleriyle müşteri memnuniyetini ve dayanıklılığı her zaman ön planda tutuyoruz.

www.mertsanhidrolik.com info@mertsanhidrolik.com +90 544 295 87 08



MSH.207216
HYDRAULIC PUMP 190cm³



MSH.207217
HYDRAULIC PUMP 130cm³



MSH.207439
HYDRAULIC PUMP 60cm³



MSH.207605
HYDRAULIC PUMP 40cm³



MSH.207432
HYDRAULIC PUMP 22cm³



MSH.207282
HYDRAULIC PUMP 22cm³



MSH.207473
HYDRAULIC PUMP



MSH.207437
HYDRAULIC PUMP 55cm³



MSH.207606
HYDRAULIC PUMP
31+31+11



MSH.207411
HYDRAULIC PUMP 31+31+08



MSH.207620
HYDRAULIC PUMP A7VO107



MSH.207142
HYDRAULIC PUMP A7VO80



MSH.207494
HYDRAULIC PUMP A2FO16



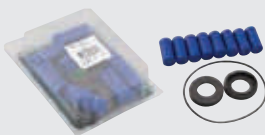
MSH.207495
HYDRAULIC PUMP A2FO23



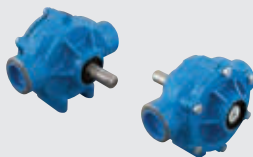
MSH.201010
WATER PUMP 7560C



MSH.206605
FIXED DISP. MOTOR



MSH.206545
SEAL KIT FOR WATER
PUMP



MSH.201011
WATER PUMP 1502C



MSH.207591
COOLING ELEMENT



MSH.207006
FAN MOTOR



MSH.207182
OIL COOLER COMPLETE
WITH FAN



MSH.207358
BOOM CONTROL VALVE



MSH.206796
VALVE CARTRIDGE PULSAR
24V



MSH.206895
HAND VALVE HVM 10632



MSH.207135
HAND VALVE HVM 10631



MSH.207382
REMOTE CONTROL



MSH.207312
CARRYING STRAP



MSH.207209
JOY STICK



MSH.207639
JOY STICK



MSH.207580
CONTROL SWITCH



MSH.207122
CONTROL SWITCH



MSH.206680
CONTROL SWITCH



MSH.207146
JOY STICK



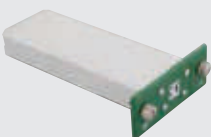
MSH.206681
CONTROL SWITCH



MSH.206795
BATTERY 7.2V



MSH.207636
BATTERY 7.2V



MSH.207082
BATTERY 9.6V



MSH.207296
EMERGENCY PUSH BUTTON



MSH.207532
FLIP SWITCH



MSH.207194
FLIP SWITCH



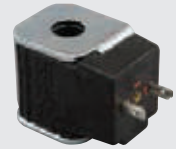
MSH.207365
FLIP SWITCH



MSH.206910
FLIP SWITCH



MSH.207524
CONNECTION CABLE



MSH.207222
MAGNETIC COIL



MSH.207592
MAGNETIC COIL 24V



MSH.207363
MAGNETIC COIL 24V



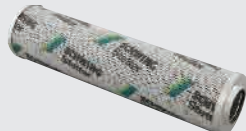
MSH.207326
MAGNETIC COIL 24V



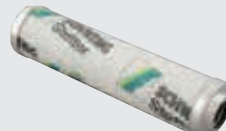
MSH.206600
FILTER ELEMENT



MSH.202137
FILTER ELEMENT



MSH.206507
FILTER ELEMENT



MSH.206602
FILTER ELEMENT



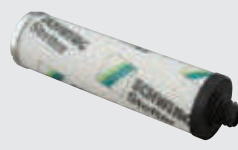
MSH.206505
FILTER ELEMENT



MSH.207204
FILTER ELEMENT



MSH.206506
FILTER ELEMENT



MSH.207576
FILTER ELEMENT



MSH.206675
FILTER ELEMENT



MSH.208030
TANK BREATHER



MSH.207574
FILTER 350 BAR



MSH.207619
FILTER



MSH.207454
FILTER ELEMENT



MSH.207413
SPIRAL FLAT SPRING



MSH.207181
HOSE DRUM NW 8



MSH.206879
HOSE DRUM NW 6RH



MSH.206880
HOSE DRUM NW 6LH



MSH.206948
TEMPERATURE SWITCH



MSH.207234
VALVE CARTRIDGE



MSH.207113
SAFETY VALVE 350 BAR



MSH.207530
VALVE CARTRIDGE EPFR



MSH.207207
CONTROL BLOCK VBL-
FFE-01



MSH.207316
MAGNETIC COIL 24V



MSH.207656
VALVE CARTRIDGE PRRS



MSH.206610
CHECK VALVE HERF-SV2-6
300 BAR



MSH.207118
CHECK VALVE HERF-
SV2-10 400 BAR



MSH.207199
CHECK VALVE 300 BAR



MSH.207310
CHECK VALVE HERF-1-10



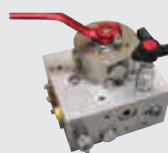
MSH.207518
CHECK VALVE HERF-
SV6-8.8-320



MSH.207517
CHECK VALVE HERF-
SV6-8.8-350



MSH.207520
CONTROL BLOCK VBL-MPS-
RV



MSH.207521
CONTROL BLOCK VBL-FF



MSH.207652
BALL VALVE 4 WAY



MSH.207646
VALVE HOUSING



MSH.207647
CHECK VALVE



MSH.207324
VALVE CARTRIDGE



MSH.207657
VALVE BVF2S-E2B60



MSH.207502
VALVE CARTRIDGE 320
BAR



MSH.207150
VALVE CARTRIDGE 330 BAR



MSH.207303
VALVE CARTRIDGE



MSH.207012
VALVE CARTRIDGE



MSH.207478
PRESSURE RELIEF VALVE



MSH.207184
CHECK VALVE



MSH.207514
CHECK VALVE



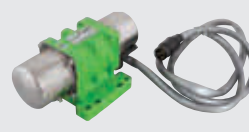
MSH.207274
VALVE CARTRIDGE



MSH.207410
VALVE CARTRIDGE



MSH.207200
PRESSURE REDUCING VALVE



MSH.207567
VIBRATOR 24V



MSH.206599
SHUT OFF VALVE



MSH.207192
PRESSURE REDUCING
VALVE, PROP



MSH.207191
PRESSURE REDUCING VALVE,
PROP



MSH.207185
CHECK VALVE



MSH.207186
VALVE CARTRIDGE



MSH.207638
 THROTTLE VALVE



MSH.207328
 PRECHARGE VALVE



MSH.206685
 PRESSURE REGULATOR
 VALVE



MSH.207621
 BALL CASTER



MSH.207519
 VALVE CARTRIDGE



MSH.207287
 DIRECTIONAL SEAT VALVE
 24V



MSH.207213
 SOLENOID VALVE 24V



MSH.207449
 RUBBER RAIL W/STEEL



MSH.207600
 RUBBER RAIL W/STEEL



MSH.207136
 BOOM HYD CYLINDER SEAL
 KIT



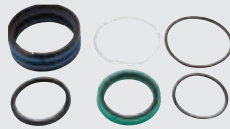
MSH.207302
 BOOM HYD CYLINDER SEAL
 KIT



MSH.207534
 SEAL KIT



MSH.207115
 BOOM HYD CYLINDER
 SEAL KIT



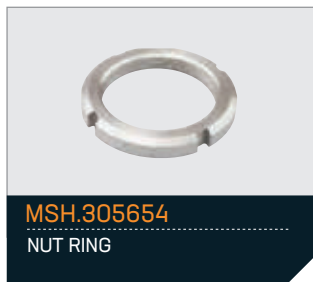
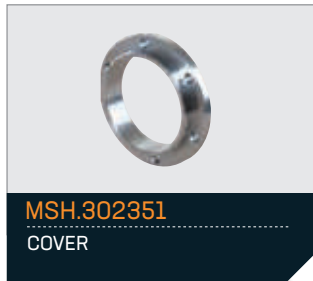
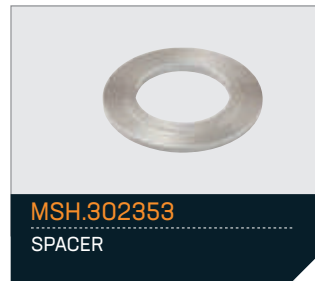
MSH.207223
 SEAL KIT



MERTSAN
HİDROLİK - YEDEK PARÇA



SPARE PARTS
SECTION





MSH.304498
WEAR RING



MSH.304498 A
WEAR RING SURFACE HARD
WELDED



MSH.306300
WEAR PLATE S8



MSH.306300 A
WEAR PLATE S8 SURFACE
HARD WELDED



MSH.304496
LEVER



MSH.300573
CYLINDER SUPPORT



MSH.300572
BUSHING



MSH.300754
BRACKET



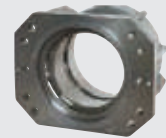
MSH.300755
SHOCK ABSORBER



MSH.300791
PIN



MSH.301794
PIN



MSH.304484
SUPPORT



MSH.300731
BRONZE BUSHING



MSH.300688
SPACER



MSH.305652
SEEGER RING



MSH.304905
SEAL SUPPORTING



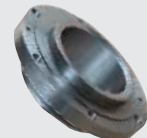
MSH.304904
GASKET



MSH.304902
RING



MSH.304901
GASKET



MSH.304906
CONNECTION



MSH.300725
GASKET



MSH.300721
SEAL SUPPORTING



MSH.301829
COVER



MSH.305649
JUNK RING



MSH.301735
AGITATOR MOTOR



MSH.304917
SPLINED SHAFT



MSH.300315
SUN GEAR



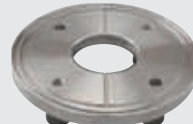
MSH.301574
SHAFT



MSH.300798
REDUCER SUPPORT



MSH.304097
COVER



MSH.300747
FLANGE



MSH.301575
SHAFT



MSH.304371
SPACER



MSH.304096
WEAR RING



MSH.304265
GASKET



MSH.304676
MIXER SHAFT



MSH.302629
MIXER PADDLE



MSH.304229
S VALVE S9 DETACHABLE



MSH.307151
SHAFT FOR S VALVE S9



MSH.302682
COLLAR



MSH.304218
COMPENSATING RING



MSH.307625
SPONSON



MSH.304219
WEAR RING S9



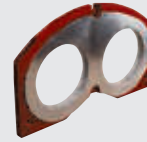
MSH.304219 A
WEAR RING S9 SURFACE
HARD WELDED



MSH.304220
COLLAR S9



MSH.304228
WEAR PLATE S9



MSH.304228 A
WEAR PLATE S9 SURFACE
HARD WELDED



MSH.307123
REAR SUPPORT



MSH.300743
GASKET



MSH.307159
BRONZE BUSHING



MSH.307160
BUSHING



MSH.307158
SPACER



MSH.307161
REAR COVER



MSH.307124
SLEWING LEVER



MSH.300238
BUSHING



MSH.304215
BUSHING



MSH.300236
BRONZE BUSHING



MSH.300234
FRONT SUPPORT



MSH.301164
BRONZE BUSHING



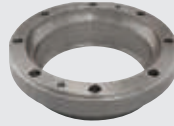
MSH.307144
BRONZE BUSHING



MSH.300242
RING



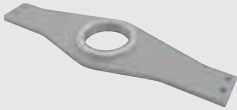
MSH.307145
RING



MSH.307122
FRONT SUPPORT



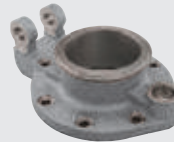
MSH.300742
GASKET



MSH.303303
SUPPORT



MSH.307155
BUSHING



MSH.304226
SUPPORT



MSH.307125
SUPPORT



MSH.307147
PIN



MSH.307164
PIN



MSH.307135
SUPPORT



MSH.302631
FLANGE



MSH.302632
GASKET



MSH.307138
SHAFT



MSH.307136
SHAFT



MSH.307141
SPACER



MSH.308558
MIXER SHAFT



MSH.307303
GASKET S8



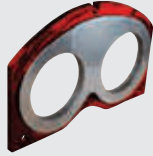
MSH.300712
HYDRAULIC CYLINDER



MSH.300782
S VALVE S6



MSH.300542
COLLAR S6



MSH.300890
WEAR PLATE S6



MSH.304745
WEAR RING S6



MSH.300800
S VALVE



MSH.306866
COLLAR



MSH.307228
WEAR PLATE



MSH.301834
WEAR RING



MSH.300738
ROTATION CYLINDER



MSH.300752
PISTON ROD



MSH.300740
CYLINDER TUBE Ø80x95x270



MSH.300766
REAR BOTTOM



MSH.300768
WASHER



MSH.300781
FRONT GUIDE



MSH.300769
TIE ROD



MSH.303421
ROTATION CYLINDER
Ø80x56x222



MSH.300730
CYLINDER HEAD



MSH.305781
PISTON ROD Ø56x422



MSH.305669
CYLINDER TUBE
Ø80x100x334



MSH.305779
PISTON HEAD



MSH.305747
GUIDE BUSHING



MSH.305810
BUSHING



MSH.305725
BOTTOM



MSH.303385
ROTATION CYLINDER



MSH.301000
BALL JOINT



MSH.301012
CYLINDER TUBE



MSH.301026
PISTON ROD



MSH.301037
PISTON HEAD



MSH.301056
GUIDE BUSHING



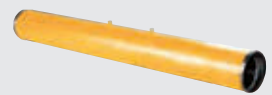
MSH.306693
RUBBER PISTON 230mm



MSH.300231
RUBBER PISTON 230mm



MSH.300059
CONCRETE CYLINDER
200mm



MSH.302806
CONCRETE CYLINDER
230mm



MSH.302810
FLANGE



MSH.302810 A
FLANGE INSIDE HARD
WELDED



MSH.302809
RING



MSH.306168
CONCRETE CYLINDER
230mm



MSH.304216
REDUCTION INSIDE HARD
WELDED



MSH.304214
RING



MSH.302639
PISTON CONNECTOR



MSH.306329
PISTON CONNECTOR



MSH.302637
FLANGE



MSH.302156
ADAPTER



MSH.305490
BUSHING



MSH.305491
CROWN



MSH.305489
FLANGE



MSH.305492
PISTON CONNECTOR



MSH.302640
COUPLING



MSH.309721
HYDRAULIC CYLINDER
Ø70x115x1500



MSH.309722
CYLINDER TUBE



MSH.309723
PISTON ROD



MSH.309724
CYLINDER BOTTOM



MSH.309725
FRONT HEAD



MSH.309726
PISTON HEAD



MSH.309727
WASHER



MSH.309728
GUIDE BUSHING



MSH.309729
COVER



MSH.305190
HYDRAULIC CYLINDER
Ø80x120x2000



MSH.300065
CYLINDER TUBE



MSH.307925
PISTON ROD



MSH.307966
PISTON HEAD



MSH.308529
GUIDE BUSHING



MSH.308198
COVER



MSH.307984
HYDRAULIC CYLINDER
Ø80x120x2000



MSH.306188
CYLINDER TUBE



MSH.306182
PISTON HEAD



MSH.306183
PISTON ROD



MSH.306184
LIMIT SWITCH



MSH.306186
GUIDE BUSHING



MSH.306185
COVER



MSH.307985
HYDRAULIC CYLINDER
Ø80x110x2000



MSH.304514
CYLINDER TUBE



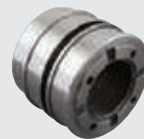
MSH.304524
PISTON ROD



MSH.304525
LIMIT SWITCH



MSH.304518
GUIDE BUSHING



MSH.304523
PISTON HEAD



MSH.304517
FLANGE



MSH.308110
HYDRAULIC CYLINDER
Ø120x80x2000



MSH.308111
PISTON ROD



MSH.305530
CARRIER



MSH.305536
PINION SHAFT



MSH.307423
WATER PUMP K-75



MSH.307874
GREASER PUMP



MSH.300553
OUTLET ELBOW



MSH.305130
OUTLET ELBOW



MSH.305508
OUTLET ELBOW



MSH.305325
OUTLET ELBOW



MSH.307170
PIN



MSH.308974
OUTLET ELBOW



MSH.300763
OUTLET ELBOW



MSH.303277
OUTLET ELBOW



MSH.308112
ELBOW



MSH.308113
ELBOW



MSH.303709
LEVER JOINT



MSH.306598
LEVER JOINT



MSH.304008
LEVER JOINT



MSH.308114
TUBE HOLDER



MSH.301965
PIN



MSH.307156
WEDGE



MERTSAN
HİDROLİK - YEDEK PARÇA



SPARE PARTS
SECTION



MSH.500106
S VALVE



MSH.500106 A
S VALVE INSIDE HARD
WELDED



MSH.500107
WEAR PLATE



MSH.500107 A
WEAR PLATE SURFACE HARD
WELDED



MSH.500109
WEAR RING



MSH.500109 A
WEAR RING SURFACE HARD
WELDED



MSH.500112
WASHER



MSH.500113
SEAL RING



MSH.500165
NUT



MSH.500121
RING



MSH.500149
RING



MSH.500120
GASKET



MSH.500119
RING



MSH.500116
SUPPORT



MSH.500118
BUSHING



MSH.500117
COVER



MSH.500110
SLEWING LEVER



MSH.500180
PIN



MSH.500158
SLEWING CYLINDER



MSH.500190
JOINT HEAD



MSH.500191
PISTON ROD



MSH.500192
PISTON HEAD



MSH.500193
CYLINDER TUBE



MSH.500194
GUIDE BUSHING



MSH.500195
BOTTOM COVER



MSH.500181
PIN



MSH.500108
FLANGED SLEEVE



MSH.500122
BUSHING



MSH.500125
BUSHING



MSH.500179
COVER



MSH.500123
GASKET



MSH.500178
SUPPORT



MSH.500124
BRONZE BUSHING



MSH.500130
SECTOR



MSH.500127
BUSHING



MSH.500128
RING



MSH.500126
RING



MSH.500129
GASKET



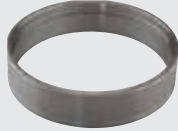
MSH.500111
UNION



MSH.500148
RING



MSH.500133
SEAL SUPPORTING



MSH.500115
RING



MSH.500114
UNION



MSH.500114 A
UNION INSIDE HARD WELDED



MSH.500154
CONCRETE CYLINDER



MSH.500105
RUBBER PISTON 230mm



MSH.500196
CONNECTOR



MSH.500197
COUPLING



MSH.500198
MAIN HYDRAULIC
CYLINDER 125/80



MSH.500199
COVER FOR CYLINDER



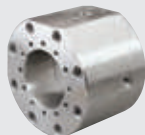
MSH.500200
GUIDE BUSHING



MSH.500201
BUSHING



MSH.500202
BUSHING



MSH.500203
FRONT SECTION HEAD



MSH.500204
RING NUT



MSH.500205
PISTON HEAD 125mm



MSH.500206
PISTON ROD 80mm



MSH.500207
MAIN HYD. CYLINDER TUBE
125x150

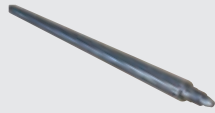


MSH.500208
END PLATE



MSH.500223
MAIN HYDRAULIC CYLINDER
140/90


MSH.500224

 MAIN HYD. CYLINDER
 TUBE 140

MSH.500225

PISTON ROD 90MM


MSH.500226

COVER


MSH.500227

GUIDE BUSHING


MSH.500228

PISTON HEAD 140mm


MSH.500229

FRONT HEAD


MSH.500230

END PLATE


MSH.500231

RING NUT


MSH.500183

REDUCTION UNIT


MSH.500250

HOUSING


MSH.500251

SPUR WHEEL


MSH.500252

BEVEL GEAR


MSH.500253

PINION GEAR


MSH.500254

BEVEL GEAR


MSH.500255

HOLLOW SHAFT


MSH.500256

CARRIER

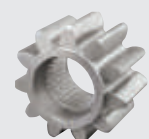

MSH.500257

PINION GEAR


MSH.500258

PIN FOR PINION GEAR


MSH.500259

 SHAFT FOR TOWER GEAR
 BOX

MSH.500260

PINION



MSH.500261
SHAFT FOR TOWER GEAR
BOX



MSH.500262
PINION



MSH.500182
MIXING PADDLE



MSH.500232
MIXING SHAFT MIDDLE



MSH.500173
DRIVE PIN



MSH.500153
DRIVING PIN



MSH.500176
SUPPORT



MSH.500171
FLANGE SUPPORT



MSH.500152
GASKET



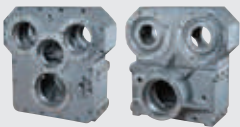
MSH.500188
INSIDE FLANGE



MSH.500151
WEAR RING



MSH.500280
DISTRIBUTOR GEAR BOX
COMPLETE



MSH.500281
HOUSING FOR GEAR BOX



MSH.500285
SPUR WHEEL D208/114x76



MSH.500286
SPUR WHEEL D169,6/85x40



MSH.500287
SPUR WHEEL D167,9/85x48



MSH.500288
SPUR WHEEL
D166,4/85x40



MSH.500289
SPLINED SHAFT



MSH.500290
CLUTCH SHAFT



MSH.500291
MOUNTING FLANGE



MSH.500292
SPLINED SHAFT D92x236



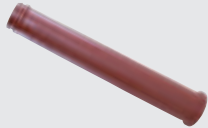
MSH.500293
SHAFT



MSH.500294
SLIDING CLUTCH



MSH.500295
SWITCH FORK



MSH.500296
TAPERED PIPE



MSH.500300
ELBOW



MSH.500301
COUPLING 8"



MSH.500302
COUPLING 7"



MSH.500155
OUTLET ELBOW
DN180/150



MSH.500156
OUTLET ELBOW DN150/150



MSH.500303
OUTLET ELBOW



MSH.500304
OUTLET ELBOW



MSH.500305
ELBOW



MSH.500306
ELBOW



MSH.500307
ELBOW



MSH.500308
ELBOW



MSH.500309
ELBOW



MERTSAN
HİDROLİK - YEDEK PARÇA



SPARE PARTS SECTION



MSH.900920
S VALVE



MSH.900932
REAR BEARING



MSH.900938
BUSHING



MSH.900953
FRONT BEARING



MSH.900954
BUSHING



MSH.900931
CLEVIS



MSH.900955
BRACKET



MSH.900922
LEVER



MSH.900620
SHIFTING CYLINDER



MSH.900956
DISTRIBUTOR HOUSING



MSH.900957
PROTECTION TUBE



MSH.900958
NUT



MSH.900959
CYLINDER TUBE



MSH.900960
CLEVIS CONNECTION



MSH.900962
HEAD



MSH.900963
PISTON ROD



MSH.900913
S VALVE



MSH.900935
WEAR BUSHING



MSH.900506
WEAR BUSHING



MSH.900508
SLIDING RING



MSH.900940
THRUST RING



MSH.900150
WEAR RING



MSH.900930
WEAR PLATE PAIR



MSH.700330
WEAR PLATE PAIR



MSH.900929
FRONT BEARING



MSH.900964
BUSHING



MSH.900928
REAR BEARING



MSH.900941
BUSHING



MSH.900512
BUSHING



MSH.900965
DISTANCE SLEEVE



MSH.700535
SWIVEL FORK



MSH.700774
BRACKET LEFT SIDE



MSH.700775
BRACKET RIGHT SIDE



MSH.900921
LEVER



MSH.900966
COVER



MSH.900310
EYE



MSH.900967
PIN



MSH.900968
SHIFTING CYLINDER



MSH.900969
PISTON ROD



MSH.900970
CYLINDER TUBE



MSH.900971
CYLINDER BOTTOM



MSH.900927
SHIFTING CYLINDER



MSH.900972
CYLINDER TUBE



MSH.900973
PISTON ROD



MSH.900974
AGITATOR PADDLE



MSH.700100
AGITATOR SHAFT



MSH.700150
FLANGED SHAFT



MSH.700190
FLANGE BEARING



MSH.900975
FLANGE BEARING



MSH.900976
BUSHING



MSH.900977
CAP



MSH.900978
FLANGE



MSH.900979
SEALING DISK



MSH.900980
AGITATOR GEAR BOX



MSH.900981
ADAPTER



MSH.900982
CLEVIS



MSH.900983
HOLLOW SHAFT



MSH.900984
PINION GEAR



MSH.900985
TOOTHED WHEEL



MSH.900986
PINION GEAR



MSH.900987
PINION GEAR



MSH.900988
SHAFT FOR TOWER GEAR BOX



MSH.900989
CARRIER



MSH.900990
PLANET GEAR



MSH.900991
PIN



MSH.901120
CONVEYING CYLINDER Ø200



MSH.901122
ADAPTER



MSH.901123
ADAPTER



MSH.901124
ADAPTER



MSH.901130
CONVEYING CYLINDER Ø230



MSH.900937
ADAPTER



MSH.901135
RUBBER PISTON DN230



MSH.900950
SPACER



MSH.900942
COUPLING BOLT



MSH.900992
DISTANCE BOLT



MSH.900993
THREADED BOLT



MSH.901200
GEAR BOX COMPLETE



MSH.901210
GEAR BOX HOUSING



MSH.901215
SPUR WHEEL D184/75x32



MSH.901216
SPUR WHEEL D164x75x36



MSH.901217
SPUR WHEEL



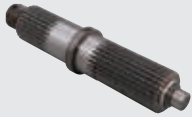
MSH.901218
SPUR WHEEL



MSH.901219
HOLLOW SHAFT



MSH.901220
SLIDING CLUTCH



MSH.901221
SHAFT



MSH.901222
GEARSHIFT FORK ASSY.



MSH.901223
SPUR WHEEL



MSH.901224
CLUTCH SHAFT



MSH.901225
PISTON



MSH.901226
SWITCHING CYLINDER



MSH.901227
FLANGE



MSH.901228
COUPLING 6"



MSH.901229
WEDGE TYPE COUPLING



MSH.901230
MOUNTING HINGE



MSH.900205
REDUCTION ELBOW



MSH.900924
REDUCER DN200-180



MSH.900919
ELBOW DN150



MSH.700300
ELBOW DN150



MSH.901300
KEY



MSH.901304
KEY



MSH.901305
REDUCTION PIPE



MSH.901306
PIPE



MSH.901307
PIPE



MERTSAN
HİDROLİK - YEDEK PARÇA



SPARE PARTS SECTION



MSH.601108
DOUBLE BEARING WATER
PUMP



MSH.601173
IMPELLER FOR D.BEARING



MSH.601172
SHAFT FOR D.BEARING
WATER PUMP



MSH.601307
MECH. SEAL FOR D. BEARING
WATER PUMP



MSH.601120
WATER PUMP GEAR TYPE



MSH.601122
SHAFT FOR GEAR TYPE
WATER PUMP



MSH.601123
IMPELLER FOR WATER PUMP



MSH.601121
WATER PUMP PULLEY TYPE



MSH.601132
V BELT PULLEY FOR
WATER PUMP



MSH.601124
SHAFT FOR PULLEY TYPE
WATER PUMP



MSH.601125
MECHANICAL SEAL FOR
WATER PUMP



MSH.601174
GEAR FOR WATER PUMP



MSH.601159
PLASTIC COUPLING



MSH.601143
WATER PUMP GEAR TYPE



MSH.601195
WATER PUMP PULLEY TYPE



MSH.601260
WATER PUMP GEAR TYPE



MSH.601240
IMPELLER



MSH.601247
IMPELLER



MSH.601241
SHAFT



MSH.601246
SHAFT



MSH.601133

COMPLETE ROLLER
Ø280x110x95



MSH.601139

BUSHING FOR ROLLER
Ø280x110x95



MSH.601144

NUT FOR BUSHING M45x1,5



MSH.601137

BOLT FOR ROLLER



MSH.601135

COMPLETE ROLLER
Ø280x160x92



MSH.601138

BUSHING FOR ROLLER
Ø280x160x92



MSH.601265

NUT FOR BUSHING M75x1,5



MSH.601136

BOLT FOR ROLLER



MSH.601155

COMPLETE ROLLER
Ø250x130x120



MSH.601157

BUSHING FOR ROLLER
Ø250x130x120



MSH.601158

NUT FOR BUSHING



MSH.601197

BOLT FOR ROLLER



MSH.601201

COMPLETE ROLLER
Ø220x110x95 (25)



MSH.601429

COMPLETE ROLLER
Ø220x110x95 (35)



MSH.601139

BUSHING FOR ROLLER
Ø220x110x95 (35)



MSH.601269

BUSHING FOR ROLLER
Ø220x110x95 (25)



MSH.601214

COMPLETE ROLLER
Ø250x130x88



MSH.601267

BUSHING FOR ROLLER
Ø250x130x88



MSH.601268

NUT FOR BUSHING



MSH.601308

PIN FOR ROLLER



MSH.601286
COMPLETE ROLLER 10FH
Ø250x160x110



MSH.601290
BUSHING FOR ROLLER
Ø250x160x110



MSH.601292
NUT FOR BUSHING



MSH.601329
COMPLETE ROLLER FOR
12m³ Ø250x170x120



MSH.601437
BUSHING FOR ROLLER
Ø250x170x120



MSH.601438
BOLT FOR ROLLER
Ø250x170x120



MSH.601434
NUT FOR BUSHING FOR
ROLLER Ø250x170x120



MSH.601306
COMPLETE ROLLER
Ø280x160x110



MSH.601364
COMPLETE ROLLER 8m³ St
Ø200x160x110.



MSH.601266
COMPLETE ROLLER
Ø200x110x103 [25]



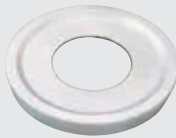
MSH.601251
COMPLETE ROLLER
Ø200x110x103 [35]



MSH.601141
COVER FOR ROLLER 32310
DN110



MSH.601140
COVER FOR ROLLER
30315 DN160



MSH.601289
COVER FOR ROLLER 32312
DN130



MSH.601439
COVER FOR ROLLER 32219
DN170



MSH.601317
COVER FOR ROLLER 30312
DN130



MSH.601188
SINGLE LEVER CONTROL
BOX STROKE:100mm



MSH.601149
SINGLE LEVER CONTROL BOX
STROKE:120mm



MSH.601105
DOUBLE LEVER CONTROL
BOX STROKE:100mm



MSH.601106
DOUBLE LEVER CONTROL BOX
STROKE:120mm



MSH.601109
CHUTE HANDLE SUPPORT



MSH.601302
CHUTE HANDLE SUPPORT LB



MSH.601397
CHUTE HANDLE SUPPORT



MSH.601199
CHUTE HYDRAULIC CYLINDER



MSH.601200
HAND PUMP FOR CHUTE
HYDR. CYLINDER



MSH.000500
MIXER RUBBER COUPLING



MSH.601347
MIXER ALUMINIUM COUPLING



MSH.601348
MIXER ALUMINIUM COUPLING
GEAR



MSH.
CARDAN SHAFT
DIFFERENT LENGTHS



MSH.601422
TRUCK MIXER GEARBOX



MSH.601440
HOUSING FOR TRUCKMIXER
GEARBOX



MSH.601441
HOUSING FOR TRUCKMIXER
GEARBOX



MSH.601501
HOUSING RING GEAR



MSH.601502
FLANGE FOR GEARBOX



MSH.601503
PLANETARY GEAR



MSH.601504
PINION GEAR



MSH.601505
PLANETARY GEAR



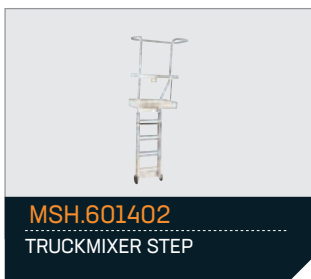
MSH.601506
PINION GEAR



MSH.601507
PLANETARY GEAR



MSH.601508
PINION GEAR

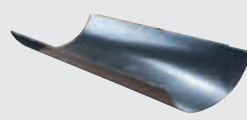




MSH.601319
WEAR PLATE



MSH.601316
CHUTE EXTENSION LONG



MSH.601274
PLASTIC LINER FOR CHUTE
LONG EXTENTION



MSH.601371
CHUTE EXTENSION SHORT



MSH.601231
PLASTIC LINER FOR
SHORT CHUTE EXTENTION



MSH.601433
EXTENSION CHUTE FOR LB.



MSH.601428
PLASTIC EXTENSION CHUTE
FOR LB.



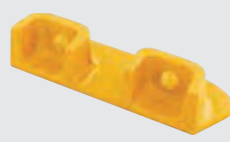
MSH.601360
HOOK FOR CHUTE
EXTENTION



MSH.601396
CHUTE BRACKET



MSH.601413
THRUST PIECE



MSH.601414
COUNTER HOLDER



MSH.601411
U BOLT CLAMP



MSH.601409
U BOLT CLAMP



MSH.601410
COUPLING FOR HYD. PUMP
23 TEETH



MSH.601283
HYDRAULIC PUMP A4VTG90



MSH.601423
HYDRAULIC MOTOR A2FM90



MSH.601398
HYDRAULIC PUMP SPV23



MSH.601403
CHARGE PUMP FOR SPV23



MSH.601399
HYDRAULIC MOTOR SMF23



MSH.601387
OIL COOLER COMPLETE



MSH.601388
FAN MOTOR FOR OIL
COOLER



MSH.601228
OIL COOLER COMPLETE



MSH.601336
FAN MOTOR



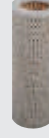
MSH.601443
OIL COOLER COMPLETE



MSH.601339
HOOD COMPLETE WITH
FAN



MSH.601376
FILTER ASSY.



MSH.601244
FILTER ELEMENT



MSH.601222
SUCTION FILTER



MSH.601444
TEMPERATURE SWITCH



MSH.601281
TEMPERATURE SWITCH



MSH.601445
TEMPERATURE SWITCH



MSH.601446
TEMPERATURE SWITCH



MSH.601365
CONTROL SWITCH 4
POSITION



MSH.601386
CONTROL SWITCH 3
POSITION



MSH.207594
PRESSURE REDUCING VALVE



MSH.601385
REMOTE STATION



MSH.601382
TME REMOTE STATION



MSH.601383
RELAY 20A, 24V



MSH.601424
SPEED SENSOR WITH CABLE



MSH.601167
WATER METER 500lt



MSH.601238
WATER METER 1000lt



MSH.601196
WATER METER 2000lt



MSH.601379
BATCHING PLANT WATER
METER





MERTSAN
HİDROLİK-YEDEK PARÇA



mertsanhidrolik.com



Fevziçakmak Mah. 10773 Global Sanayi Sitesi B
Blok 2/2 Karatay/KONYA



+90 544 295 87 08



info@mertsanhidrolik.com